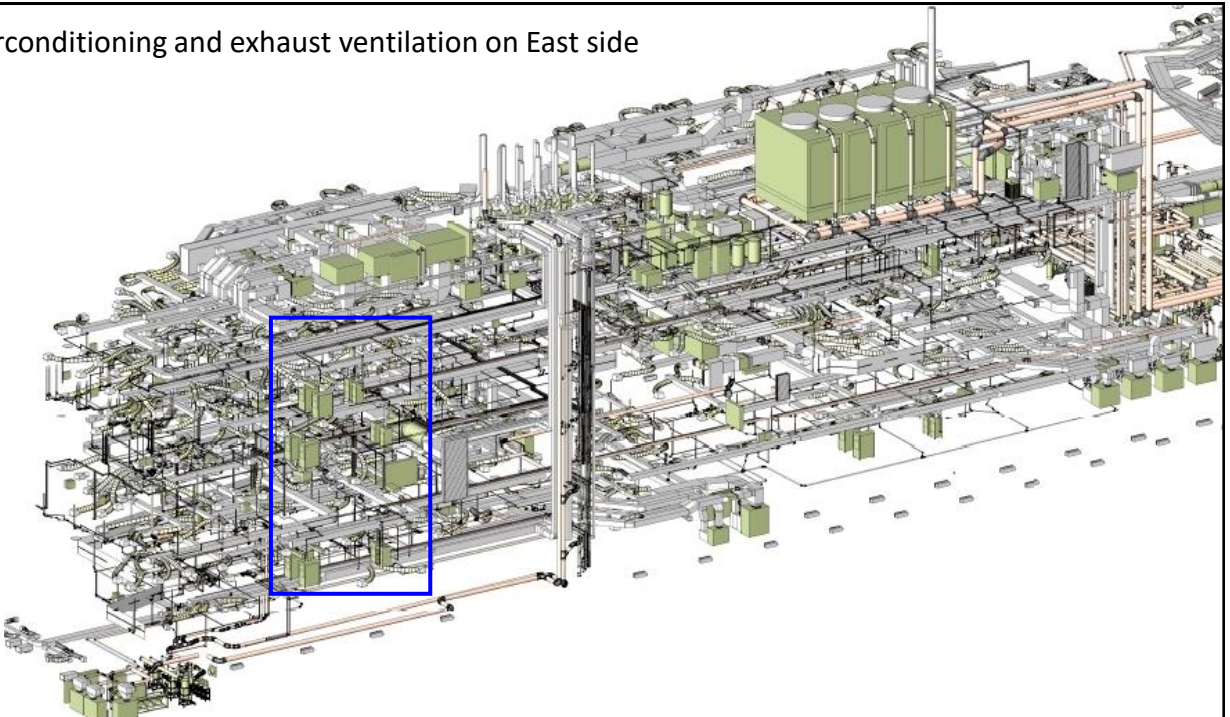


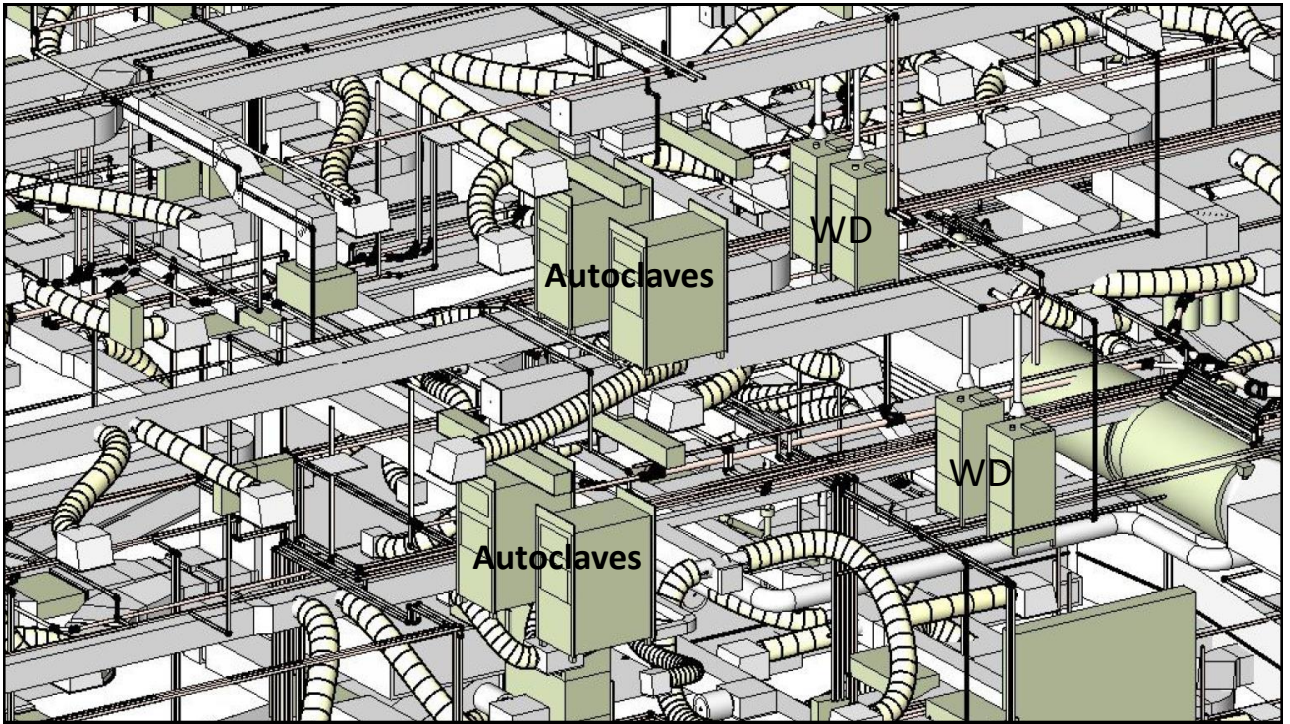
UQ Oral Health Centre, East view.

No direct sun onto instrument storage areas or CSSD reprocessing areas.

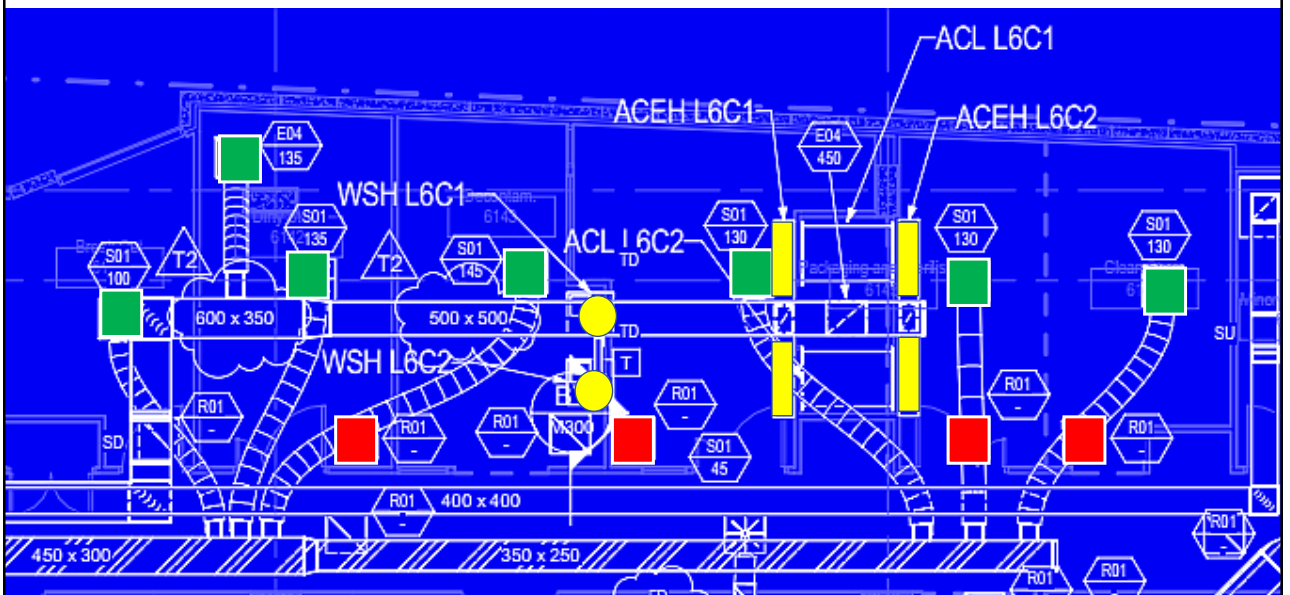
Precast concrete external slabs add thermal mass and with additional insulation beneath give a constant temperature in instrument storage areas even after hours/weekends.

Airconditioning and exhaust ventilation on East side

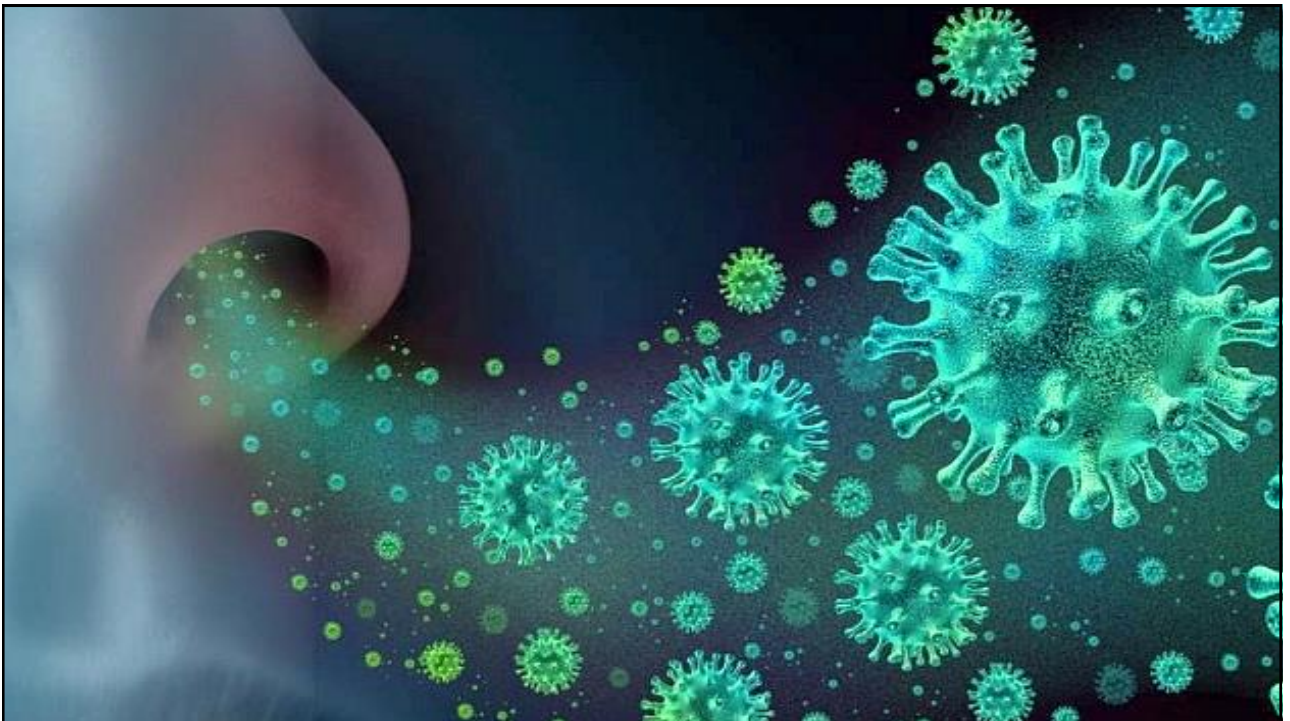




Negative exhaust ventilation, versus return air



Understanding airflow



Visitors

See a nurse for information before entering the room

For all staff Airborne Precautions

in addition to Standard Precautions

Before entering room

- 1 Perform hand hygiene
- 2 Put on N95 or P2 mask
- 3 Perform a fit check of the mask

On leaving room

- 1 Dispose of mask
- 2 Perform hand hygiene

Keep door closed at all times

For all staff Combined airborne & contact precautions

in addition to standard precautions

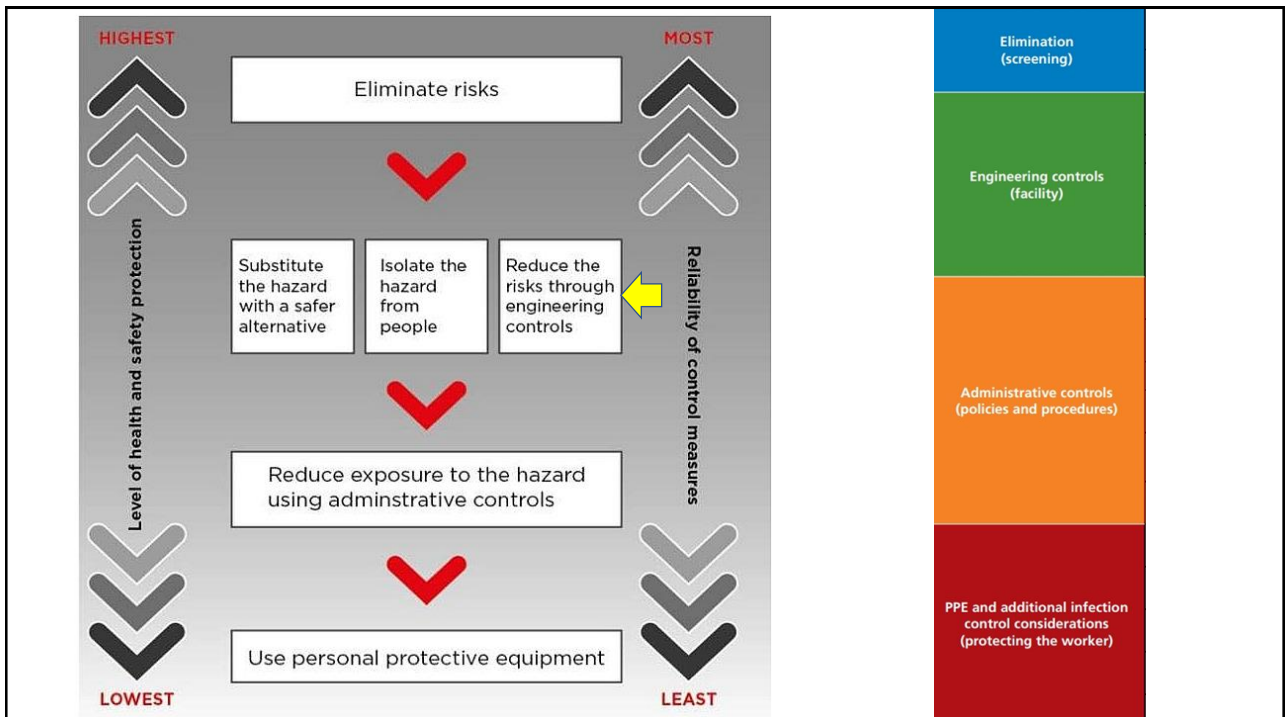
Before entering room/care zone

- 1 Perform hand hygiene
- 2 Put on gown
- 3 Put on a particulate respirator (e.g. P2/N95) and perform fit check
- 4 Put on protective eyewear
- 5 Perform hand hygiene
- 6 Put on gloves

At doorway prior to leaving room/care zone

- 1 Remove and dispose of gloves
- 2 Perform hand hygiene
- 3 Remove and dispose of gown
- 4 Leave the room/care zone
- 5 Perform hand hygiene (in an anteroom/outside the room/care zone)
- 6 Remove protective eyewear (in an anteroom/outside the room/care zone)
- 7 Perform hand hygiene (in an anteroom/outside the room/care zone)
- 8 Remove and dispose of particulate respirator (in an anteroom/outside the room/care zone)
- 9 Perform hand hygiene

KEEP DOOR CLOSED AT ALL TIMES





Split systems





Ducted central A/C



